

FRIEDMAN BENDA  
515 W 26TH STREET  
NEW YORK NY 10001

ANDILE DYALVANE  
OONOMATHOHOLO: ANCESTRAL WHISPERS  
SEPT 5 - OCT 19, 2024



*Umgodi (A Mine), 2022*



*Isiziba (A Pool), 2022*



*Umthombo (Spring), 2022*

**“My duty for now is to make sure the object is realized. And whatever else comes from this process of making for me. It’s about surrender and channeling. And allowing other people to access it.”**

**-Andile Dyalvane**

**New York** – Friedman Benda is pleased to present *OoNomathotholo: Ancestral Whispers* a new body of work and the third exhibition with the gallery by South African artist, healer, and spiritual leader, Andile Dyalvane. The public opening will be on September 5th at 515 West 26th Street in the presence of the artist.

Taking its title from the intergenerational whispers of the Xhosa people, the works in *OoNomathotholo* carry notes of ancient experience passed down through time. Acting as a conduit, Dyalvane intermingles communal legacies with movement, flow, and labor in his daily creative expression. The new works show his relentless re-engagement with the language of his past and the reality of his present, by creating complex visual metaphors of courage, teaching, and possibility through craft, form, and imagination.

Comprising a series of large and powerful vessels, crafted during a period of personal and communal loss, the works embody a history of trauma and grief while offering a perspective of harmony and rejuvenation. These works were made over a period of two years in Dyalvane’s studio in Cape Town and during a residency in Austria. Several of the works on view were presented at the historic Chatsworth House in the UK in 2023 in the exhibition *Mirror Mirror: Reflections on Design at Chatsworth*.

Returning to a familiar lexicon, Dyalvane imparts the spirit and symbolism of cycles in nature, shifting landscapes, flowing streams, cliffs, tributaries, valleys, peaks, and wildlife. But it is in the clay itself, drawn from the rivers in and around his place of birth (the village of Ngobozana in the Eastern Cape), where the viewer is struck by immediate and visceral communication with the land and the whispers of his ancestors.

Each vessel tells a story; they are torn, lacerated, and punctuated with overtly executed marks and groves. Reminders of the Xhosa practice of scarification live in the carvings and incisions but there are new directions too. One hallmark is the introduction of a vibrant color palette indicative of wildflowers and torched earth. Another is the total structural collapse of his vessels in places as a metaphor for resilience. Embracing these “happy accidents” of fallen, drooping, and crumbled surfaces as points upon which to build strength, Dyalvane is able to balance his compositions and build anew. It is precisely at these junctures that the loss of brothers, sisters, and cousins are mourned and healed, and the historic erosion of landscapes and separation from ancestral lands are processed.

Framed by the spirit and energy of a village kraal (enclosure) or ceremonial gathering, the exhibition presents these monumental vessels in a circle, hovering around a central totem. The statuesque figure is further ensconced in a horde of small drinking and cooking pots – each of which has been charred in a symbolic firing. As Dyalvane has said, “it’s the spirit of fire without having a fire there and the idea of cleansing.” Symbolizing his own practice of gifting a small pot to a new homestead each time he visits his village in the Eastern Cape, Dyalvane seems to be invoking his communal gatherings where all are invited to take part, to reinforce connection, to energize and engage. After all, bringing collective healing through these objects of exquisite craft and visual storytelling, is this ceramic healer’s gift to us.

Prior to the opening from 5-6pm on Thursday, September 5<sup>th</sup>, there will be a book signing in collaboration with Almas Art Foundation upon the occasion of the publication of *Andile Dyalvane: Ancestral Wisdom Ubunzulwazi Lwabaphantsi*.

### **About Andile Dyalvane**

Widely considered one of South Africa’s foremost ceramic artists, Dyalvane was born in 1978 in the small village of Ngobozana, near Qobo-Qobo in the Eastern Cape. He grew up farming and looking after his father’s cattle herd – developing a deep connection to the land and his Xhosa culture that resonates powerfully through his work today. His medium of clay, or *umhlaba* (mother earth) is at its most fundamental a life-affirming connection to the soil.

Dyalvane completed a National Diploma in Art and Design at Sivuyile Technical College in Gugulethu, Cape Town, followed by a National Diploma in Ceramic Design from Port Elizabeth Technikon in 2003. In 2005, he and Zizipho Poswa co-founded Imiso Ceramics. His work is in the permanent collections of the Denver Museum of Art, The Metropolitan Museum of Art, New York, the Vitra Design Museum in Weil am Rhein, Yingge Ceramic Museum in Taipei, Iziko South African National Gallery (SANG) in Cape Town, NMMU Art Museum in Port Elizabeth, and the Corobrik Ceramics Collection of Pretoria Art Museum in Pretoria, South Africa. He has presented his ceramics in exhibitions at Friedman Benda and Southern Guild, as well as museums all over the world, including the National Art Museum of China, the Vitra Design Museum, and Iziko SANG. A member of the International Academy of Ceramics, Dyalvane has received residencies in Denmark, France, the United States, UK, and Taiwan, and shares his knowledge through master classes and workshops in South Africa and internationally. He is the recipient of the 2015 Design Foundation Icon Award.

### **About Friedman Benda**

Friedman Benda identifies and advances key narratives that intersect contemporary design, craft, architecture, fine art, and cutting-edge technological research. The gallery promotes synthesis between leading creative thinkers and makers by creating opportunities to advance new connections within the global design community. Friedman Benda is committed to a critical view of design history. We aim to expand the design dialogue from its established sources, exploring perspectives that have previously been marginalized. Spanning five continents and five generations, Friedman Benda represents a roster of seminal established and emerging designers, as well as historically significant estates. With locations in New York and Los Angeles, the gallery’s exhibitions, publications and collaborations with institutions have played a vital role in the development of the contemporary design market and scholarship since 2007. For further information please visit [www.friedmanbenda.com](http://www.friedmanbenda.com) and the gallery’s Instagram @friedman\_benda and YouTube channel @FriedmanBenda.

###

### **Media Contacts:**

Blue Medium, Inc.  
Michelle DiLello  
[michelle@bluemedium.com](mailto:michelle@bluemedium.com)  
T: +1 (212) 675-1800

Friedman Benda  
Lucy Gong  
[lucy@friedmanbenda.com](mailto:lucy@friedmanbenda.com)  
T: +1 (212) 239-8700

FRIEDMAN BENDA  
515 W 26TH STREET  
NEW YORK NY 10001  
+1 212 239 8700  
WWW.FRIEDMANBENDA.COM

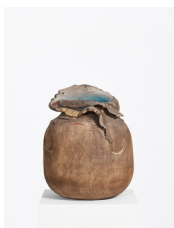
Andile Dyalvane  
*OoNomathotholo: Ancestral Whispers*  
September 5 - November 2, 2024



**Andile Dyalvane [South African, b. 1978]**  
*Amaza (Waves) Umwonyo Series, 2022*  
Glazed stoneware  
36 x 22 x 22 inches  
92 x 55 x 55 cm



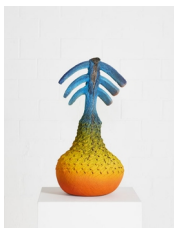
**Andile Dyalvane [South African, b. 1978]**  
*Gori, 2024*  
Glazed earthenware  
30 x 26 1/2 x 26 1/2 inches  
76 x 67 x 67 cm



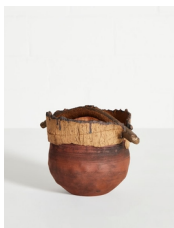
**Andile Dyalvane [South African, b. 1978]**  
*Ingxondorha (Volatile Rocky Terrain), 2022*  
Glazed stoneware  
29 x 21 x 21 inches  
73 x 54 x 54 cm



**Andile Dyalvane [South African, b. 1978]**  
*Isiziba (A Pool) Umwonyo Series, 2022*  
Glazed stoneware  
29 1/2 x 19 x 19 inches  
75 x 48 x 48 cm



**Andile Dyalvane [South African, b. 1978]**  
*Ixhanti, 2024*  
Glazed earthenware  
42 1/4 x 21 1/4 x 21 1/4 inches  
107.5 x 54 x 54 cm



**Andile Dyalvane [South African, b. 1978]**  
*Iziko, 2024*  
Glazed earthenware  
8 1/4 x 8 1/2 x 8 1/2 inches  
21 x 21.5 x 21.5 cm

FRIEDMAN BENDA  
515 W 26TH STREET  
NEW YORK NY 10001  
+1 212 239 8700  
WWW.FRIEDMANBENDA.COM



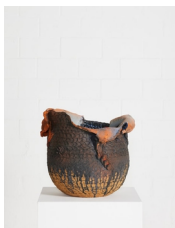
**Andile Dyalvane [South African, b. 1978]**  
*Mantwentwe*, 2024  
Glazed earthenware  
31 1/2 x 25 x 27 1/4 inches  
80 x 63.5 x 69 cm



**Andile Dyalvane [South African, b. 1978]**  
*Mpira*, 2024  
Glazed earthenware  
32 x 24 1/2 x 25 inches  
81 x 62.5 x 63.5 cm



**Andile Dyalvane [South African, b. 1978]**  
*Nomcoko*, 2024  
Glazed earthenware  
32 1/2 x 22 x 22 1/2 inches  
82.5 x 55 x 57 cm



**Andile Dyalvane [South African, b. 1978]**  
*S'khondo*, 2024  
Glazed earthenware  
25 x 27 1/2 x 27 1/2 inches  
63.5 x 70 x 70 cm

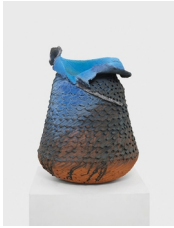


**Andile Dyalvane [South African, b. 1978]**  
*Umgodi (A Mine) Umwonyo Series*, 2022  
Glazed stoneware  
30 x 19 x 19 inches  
75 x 48 x 48 cm



**Andile Dyalvane [South African, b. 1978]**  
*Umthombo (Spring) Umwonyo Series*, 2022  
Glazed stoneware  
29 1/2 x 19 x 19 inches  
75 x 48 x 48 cm

FRIEDMAN BENDA  
515 W 26TH STREET  
NEW YORK NY 10001  
+1 212 239 8700  
WWW.FRIEDMANBENDA.COM



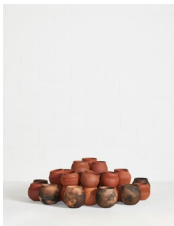
**Andile Dyalvane [South African, b. 1978]**  
*uMwonyo I, 2023*  
Glazed earthenware  
30 x 22 3/4 x 22 1/2 inches  
76 x 58 x 57 cm



**Andile Dyalvane [South African, b. 1978]**  
*uMwonyo II, 2023*  
Glazed earthenware  
38 1/2 x 22 1/2 x 22 inches  
98 x 57 x 56 cm



**Andile Dyalvane [South African, b. 1978]**  
*uMwonyo III, 2023*  
Glazed earthenware  
38 1/2 x 22 1/2 x 22 inches  
97.8 x 57 x 56 cm



**Andile Dyalvane [South African, b. 1978]**  
*x 60 Pots, 2024*  
Glazed earthenware  
Dimensions variable, each approximately:  
8 1/4 x 8 1/2 x 8 1/2 inches  
21 x 21.5 x 21.5 cm